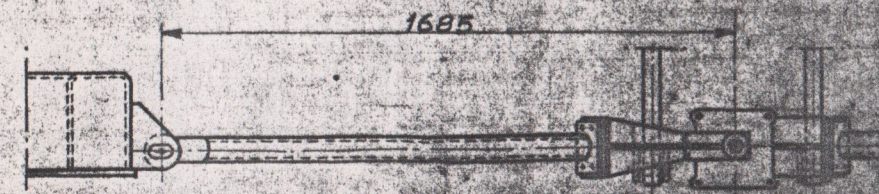
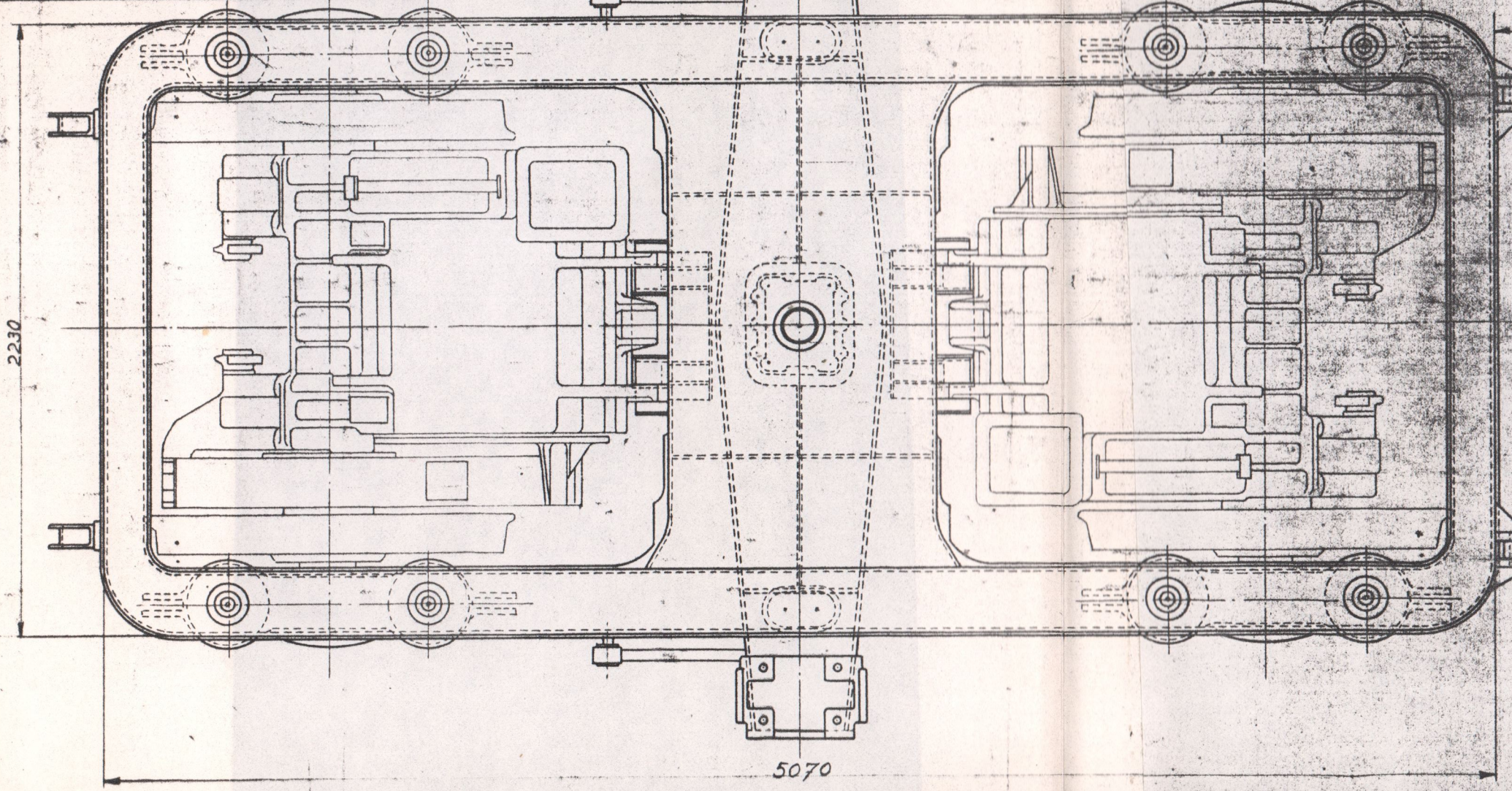


Flexibilité par tonne/bogie
 Buigzaamheid per ton/draaistel

primaire	secondaire secondaire	prim + sec.
$\frac{17,2}{8} = 2,15\text{mm}$	$\frac{10,10}{2} = 5,07\text{mm}$	7,22mm



Loco type 122
 Bogie
 Schéma
 Echelle: 1/20
 Schaal: 1/20

(B) 100 2 162 M