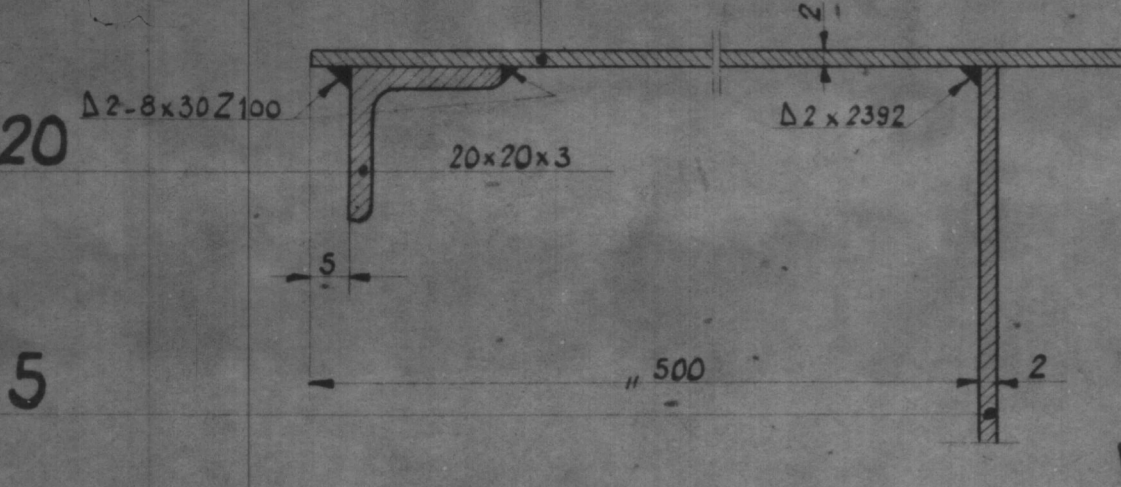
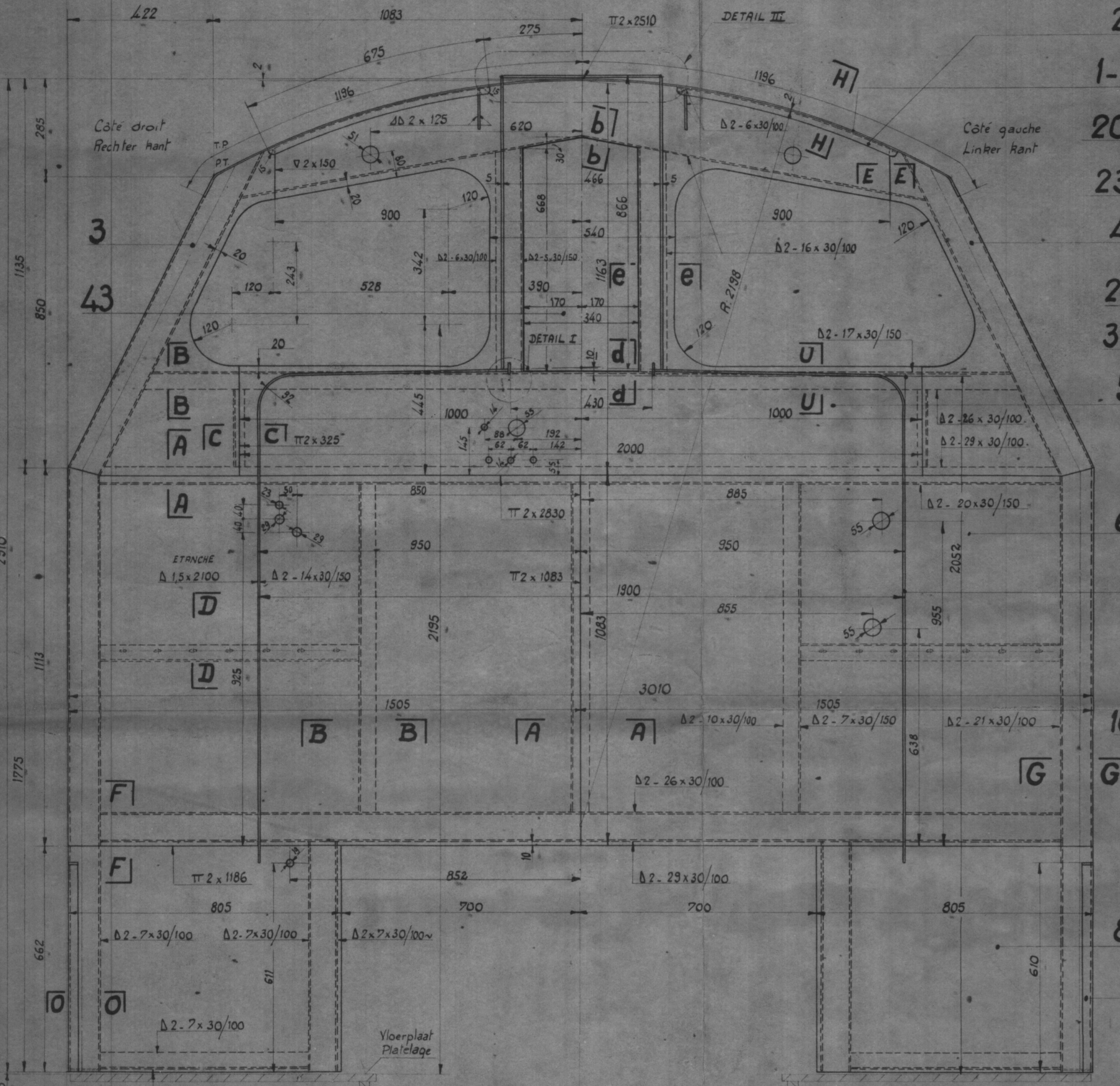


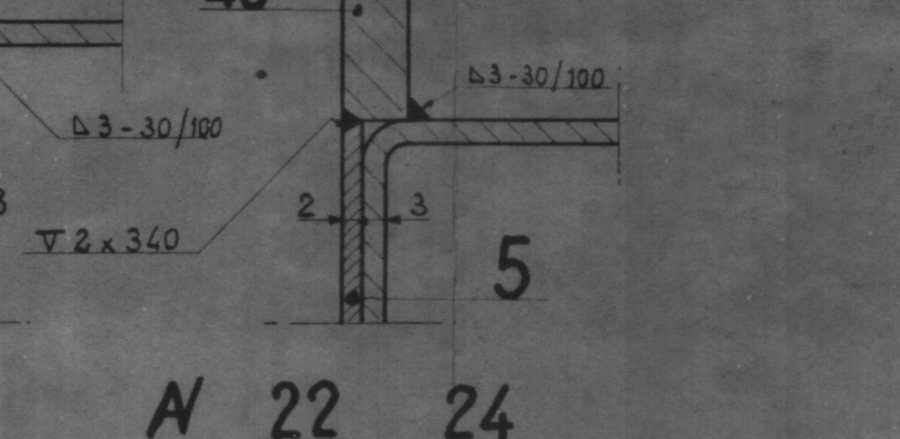
1-2 COUPE H-H DOORSNEDE H-H



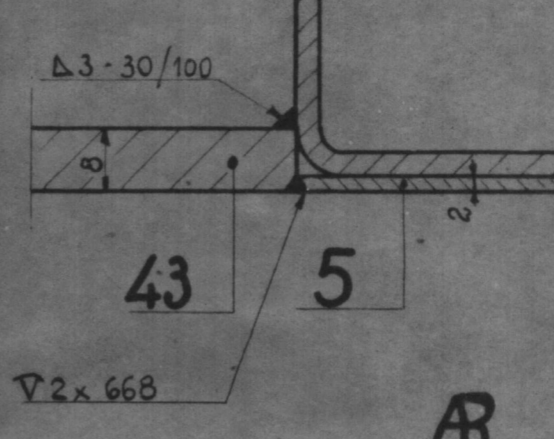
FACE AVANT  
VOORAANZICHT



COUPES b-b. DOORSNEDEN d-d.

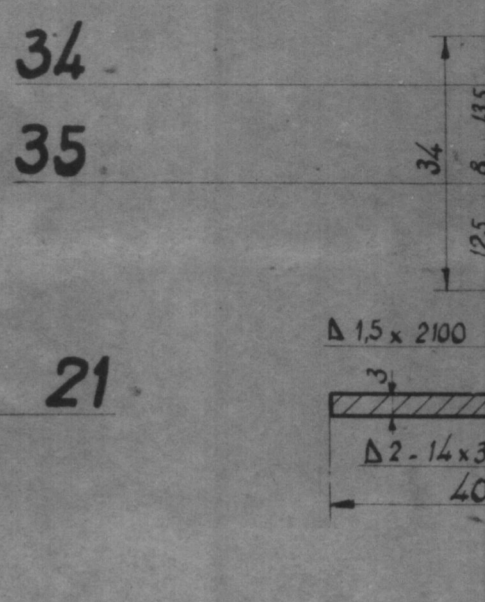


e-e



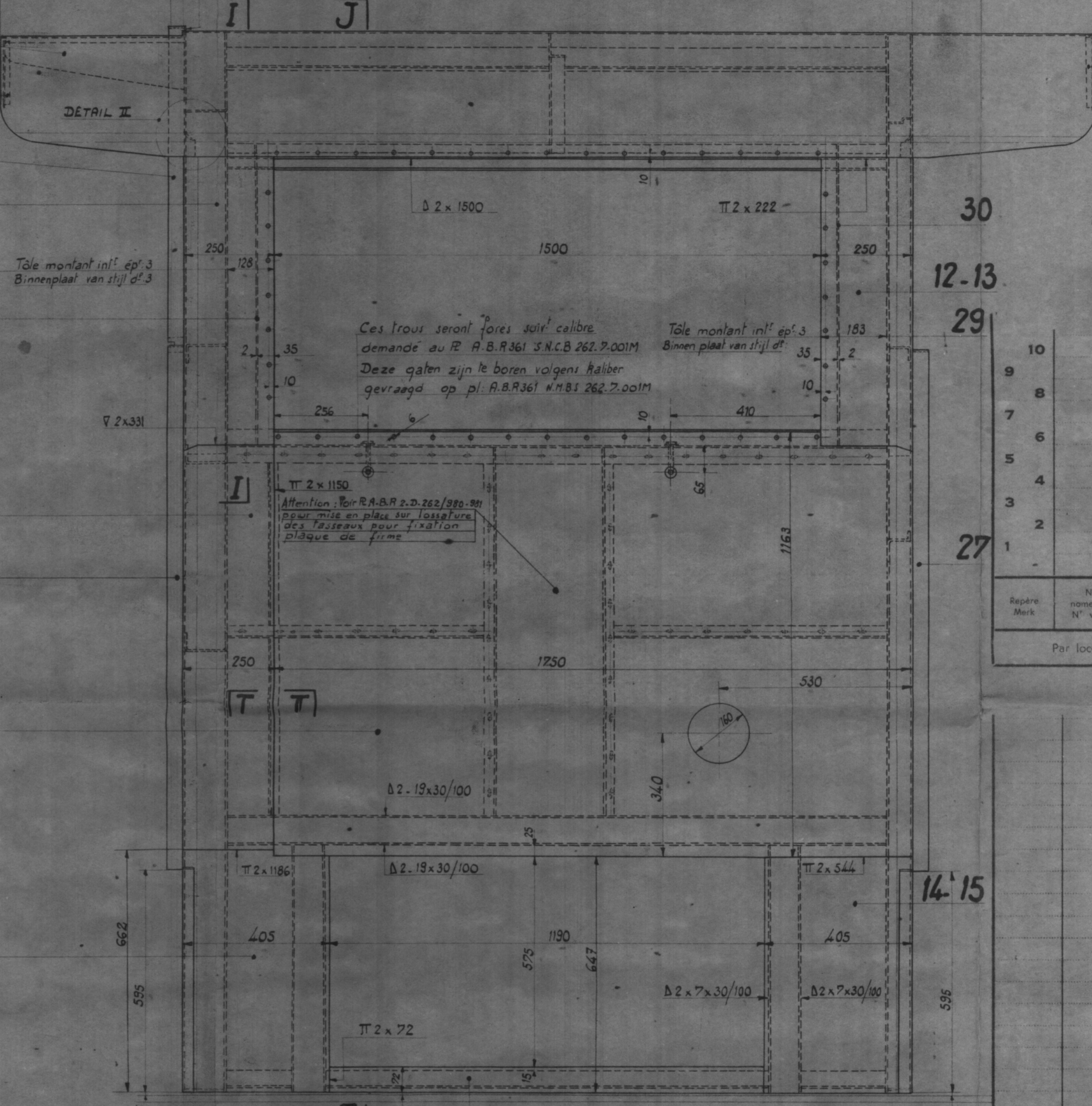
Note: Buiten legesleide aan dunnings, dienen de buiten platen op het geraamte gelast met lasnaden van Δ2, lengte 30, hart afstand 100 mm.  
 Note: Sauf indications contraires, les tôles extérieures seront soudées à l'armature par des cordons de soudure de Δ2 long 30 espacés de 100 mm.

COUPE DOORSNEDE U-U



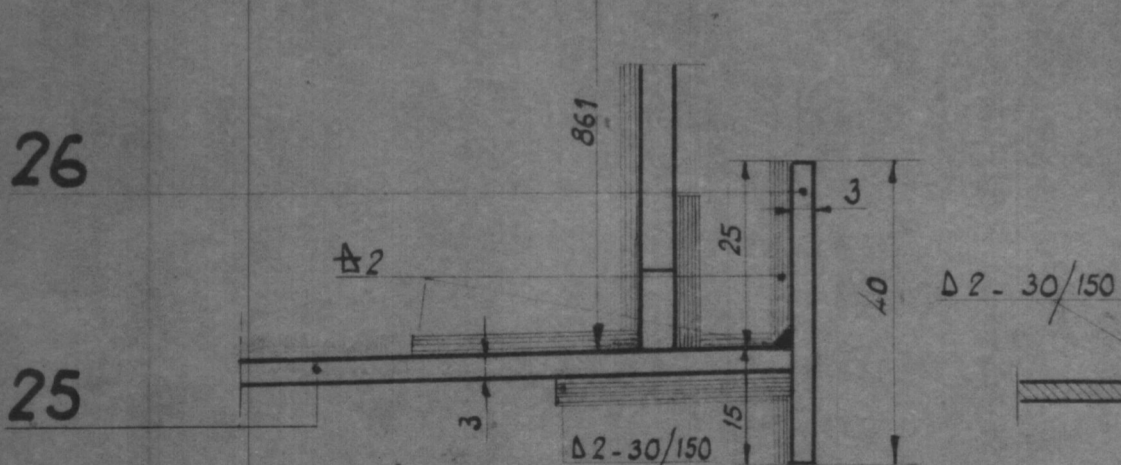
Voir R.A.B.R. 381 -  
 Zie R.S.N.C.B. 262.7.011M  
 N.M.B.S.

Voor de stukkenlijst zie R.  
 Pour la légende voir R.A.B.R. 2-262-D/343 - N.M.B.S.  
 Pour details voir R.A.B.R. 2-262-D/344 - S.N.C.B.  
 Voor details zie R. N.M.B.S. 262-1-304M.

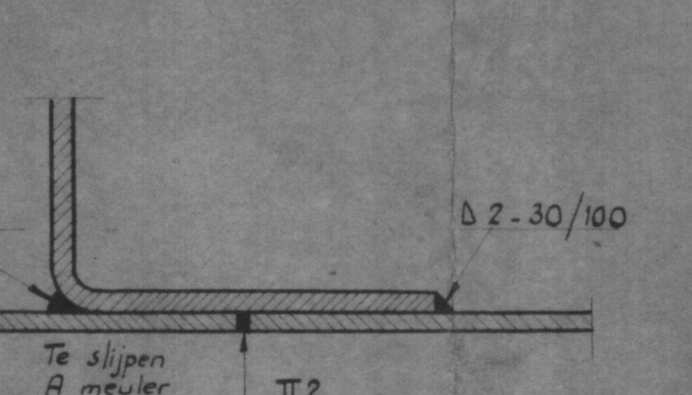


Repère Mark	N° de nomenclature N° van lijst	Matière Stof	Quantité Aantal	Dénomination	Benaming
Par locomotive		il faut :		Per locomotief	
				is er nodig :	

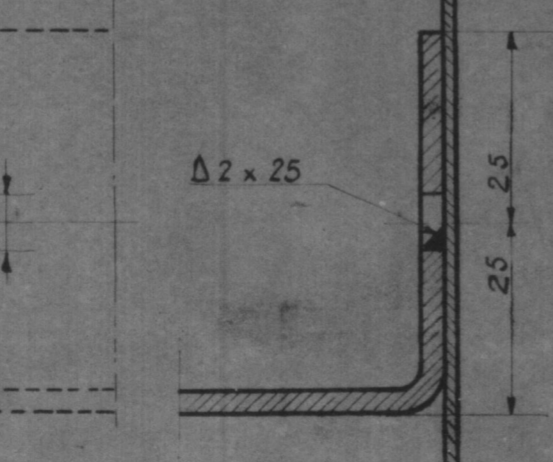
DETAIL I



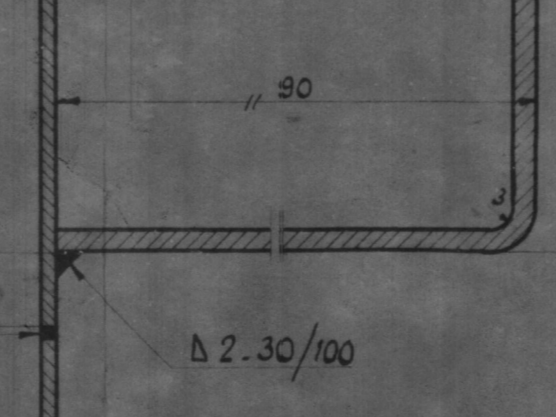
COUPE DOORSNEDE A-A



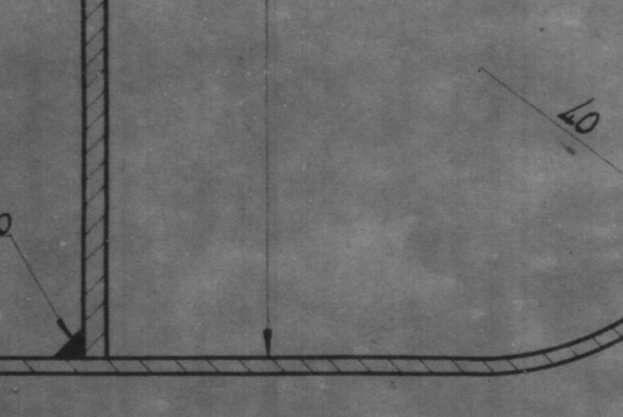
COUPE DOORSNEDE D-D



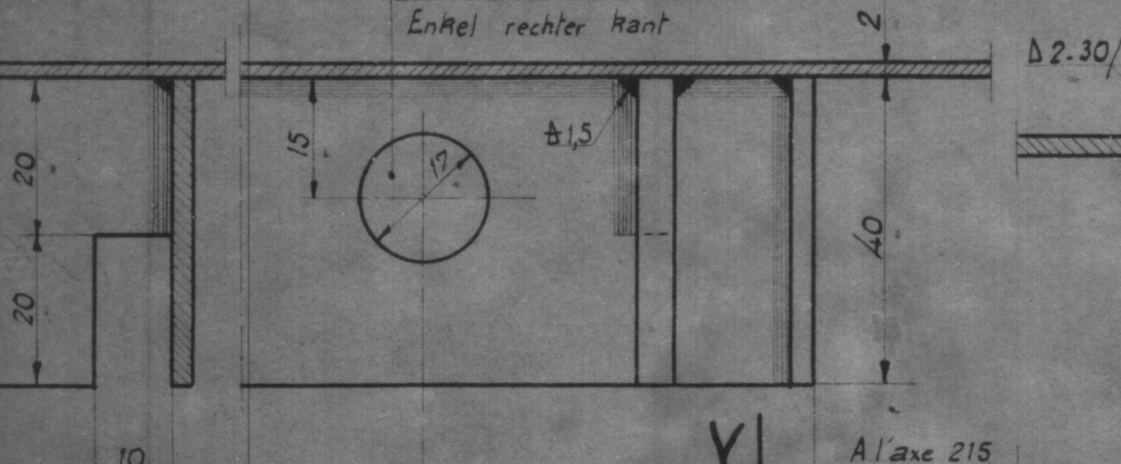
COUPE DOORSNEDE F-F



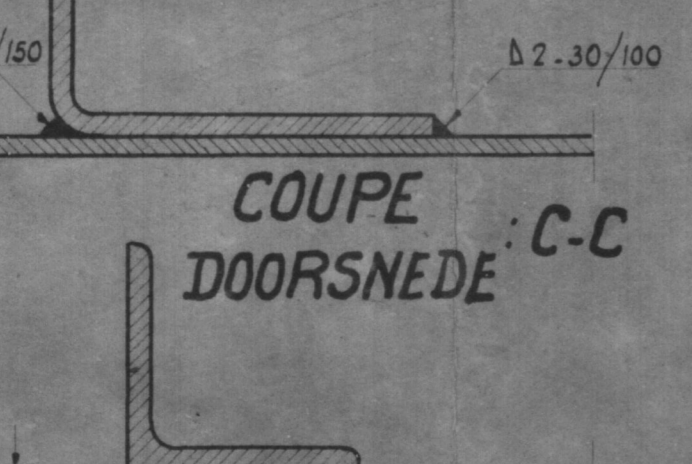
COUPE DOORSNEDE G-G



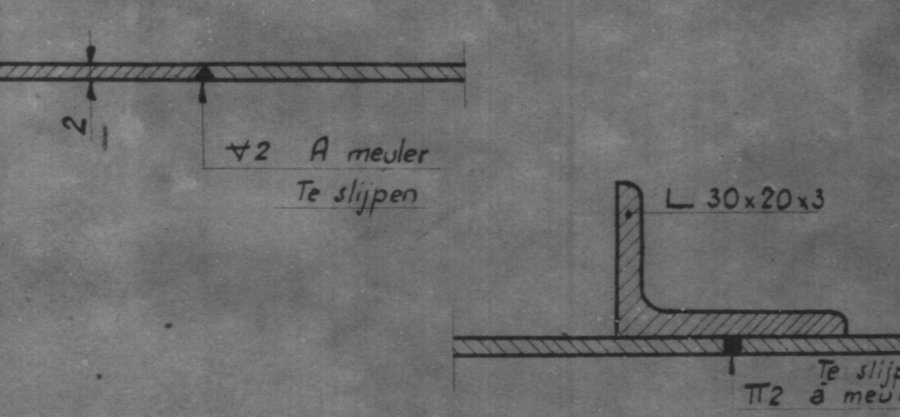
COUPE DOORSNEDE V-V



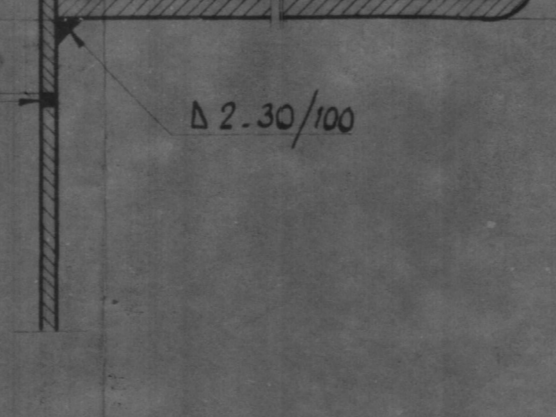
COUPE DOORSNEDE B-B



COUPE DOORSNEDE E-E



COUPE DOORSNEDE T-T



Date Date	MODIFICATIONS	WIJZIGINGEN	Par delegation of medelijding
	LOCOMOTIVE DIESEL HYDRAULIQUE TYPES 262-273 CABINE TÔLAGE EXTERIEUR	DIESEL HYDRAULISCHE LOCOMOTIEF TYPEN 262-273 KABINE BUISTENSTE PLATWERK	

262-1-302M

Bureau 25-12