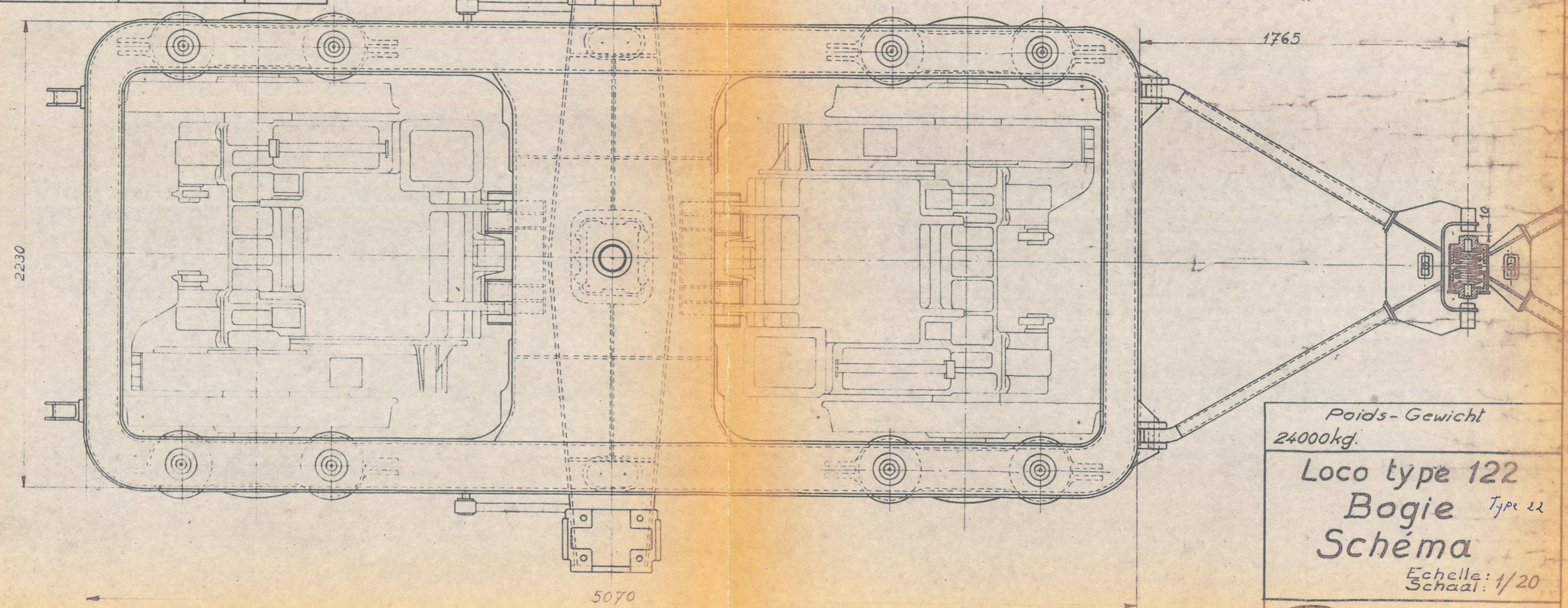
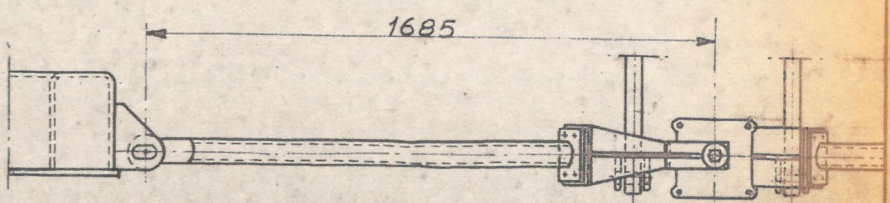


Flexibilité par tonne / bogie
 Buigzaamheid per ton / draaistel

primaire	secondaire secondaire	prim + sec.
$\frac{17,2}{8} = 2,15 \text{ mm}$	$\frac{3,75}{2} = 1,875$ $\frac{4,815}{2} = 2,4075 \text{ mm}$	$\frac{10,25}{2} = 5,125$ $\frac{10,25}{2} = 5,125 \text{ mm}$



Poids - Gewicht
 24000kg.
 Loco type 122
 Bogie Type 22
 Schéma
 Echelle: 1/20
 Schaal: 1/20

10.01.77
 16-2-72
 21-2-61
 8-3-57

(B) 100-2.142 M